



# MONTHLY MEMBERSHIP PROGRESS REPORT

District 110AZ

Results as of: 11/30/2015

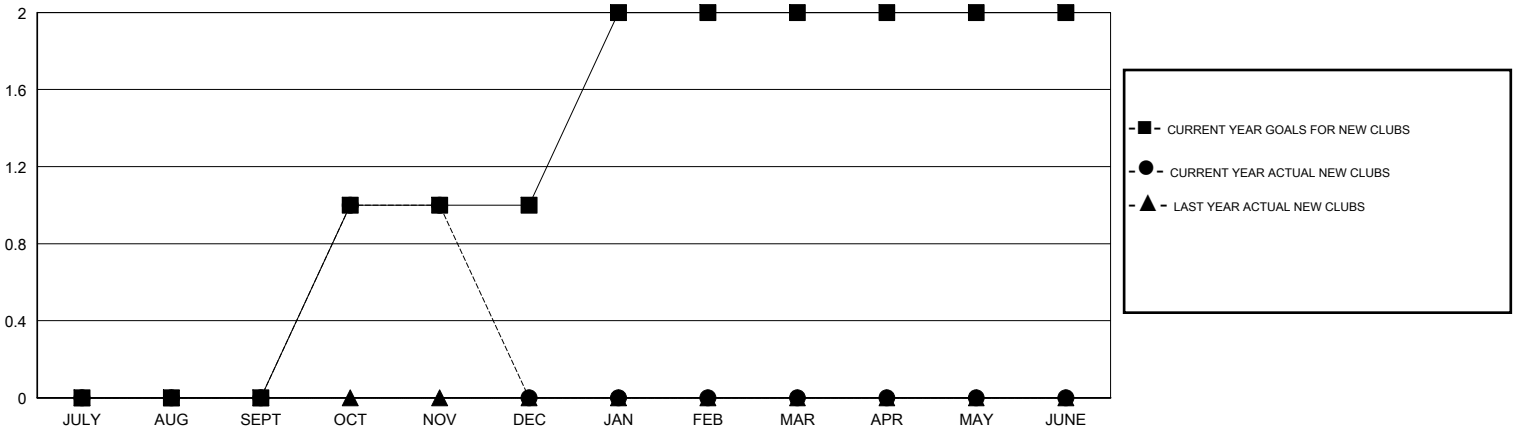
GMT: Elisabeth Haderer

LOCATION NETHERLANDS

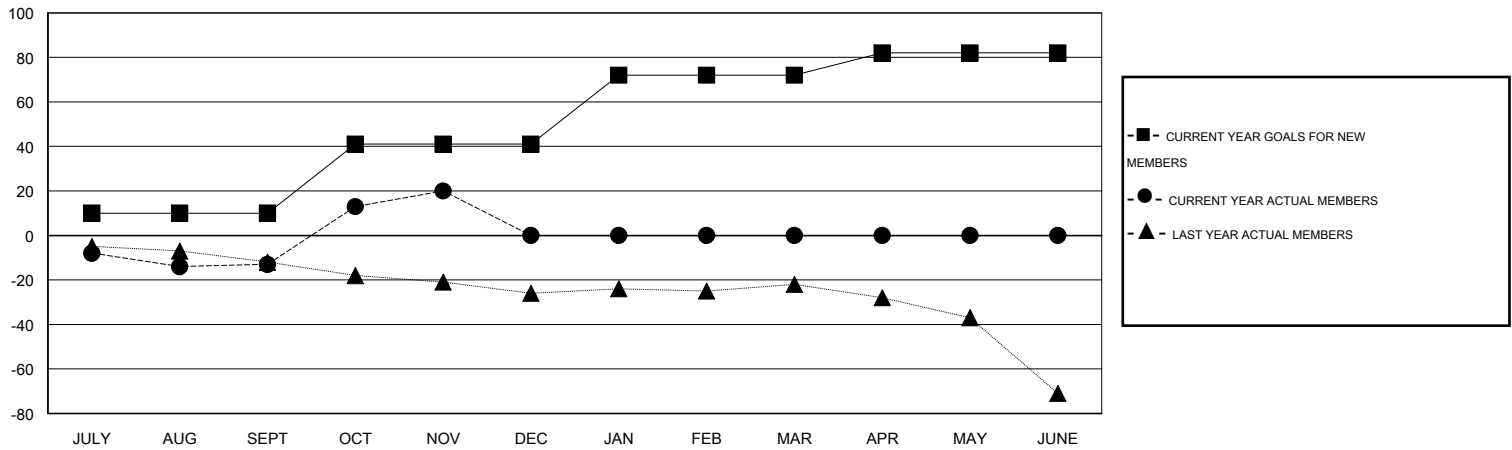
GMT CA 4

Clubs					Members				
RESULTS FOR 2015-2016					RESULTS FOR 2015-2016				
QUARTER	NEW CLUB GOAL	NEW CLUBS	DROPPED CLUBS	NET GAIN/LOSS	QUARTER	NEW MEMBER GOAL	CHARTER AND NEW MEMBERS ADDED	DROPPED MEMBERS	NET GAIN/LOSS
JULY/AUG/SEPT	0	0	0	0	JULY/AUG/SEPT	10	6	19	-13
OCT/NOV/DEC	1	1	0	1	OCT/NOV/DEC	31	42	9	33
JAN/FEB/MAR	1	0	0	0	JAN/FEB/MAR	31	0	0	0
APR/MAY/JUNE	0	0	0	0	APR/MAY/JUNE	10	0	0	0

GOALS AND ACTUAL NEW CLUBS CUMULATIVE



GOALS AND ACTUAL MEMBERS CUMULATIVE



DROPPED CLUBS: 0	21 CLUBS OF 73 ADDED 1 OR MORE NEW MEMBERS	<u>GENDER DISTRIBUTION</u>	
		MALE	1,701 (82.69%)
<u>DROPPED MEMBERS</u>		FEMALE	356 (17.31%)
DECEASED	5	FAMILY UNIT MEMBERS 0 HEAD OF HOUSEHOLD 0 NON-HEAD OF HOUSEHOLD 0	
CLUB CANCELLED	0		
OTHER	23		
TOTAL	28		
<a href="#">CLICK HERE FOR HEALTH ASSESSMENT DATA</a>			